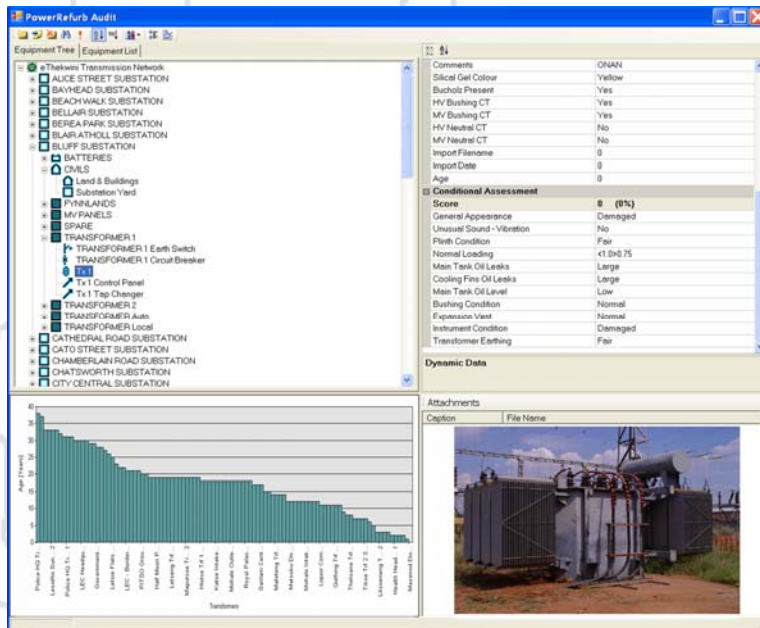


PowerRefurb

The structured approach to long term network refurbishment planning

Justifying Asset Refurbishment and Renewal Projects.



When performing Master Planning Studies or Asset Valuation on an electrical system, a crucial component is the condition of the existing network. This aspect is often neglected in Master Plans, but the life of a power system is not infinite and should be considered.

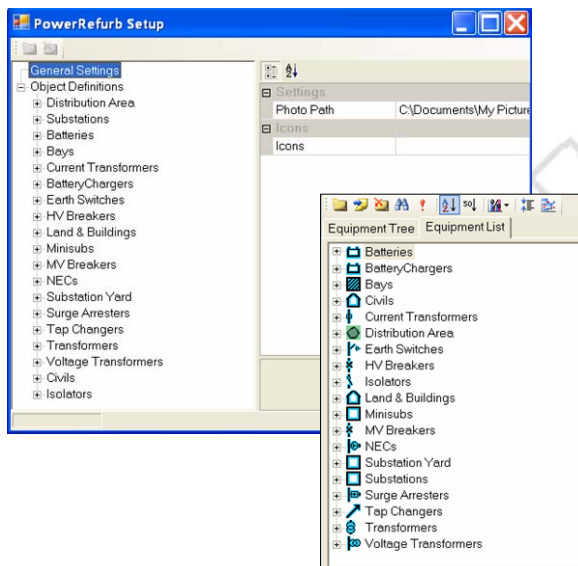
PowerRefurb for Excel provides a systematic review of substations and related networks that may have reached or exceeded their original design life

PowerRefurb for MS Excel™ features:

- The PowerRefurb add-in transforms MS Excel workbooks into an asset condition analysis tool-set.
- Managing of refurbishment planning supportive input data (e.g. age profiles, equipment condition attributes etc.).
- Ability to manage various equipment attributes ranging from name plate information, measured variables to time stamped condition assessments.
- Easy to use, dynamic study set-up to support most network or equipment refurbishment planning requirements,
- Ability to prioritize a complete network on substation or equipment basis, providing a holistic overview of network condition.
- Detail condition and age report on equipment basis for all network equipment categories.
- Identifies specific equipment requiring immediate attention as well as equipment renewal categories forming part of longer-term business strategies.
- Retain Excel functions to perform bulk data manipulation.

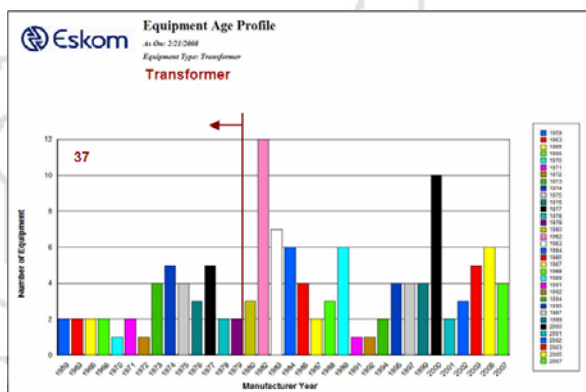
Flexible Equipment Categories

PowerRefurb for Excel provides a flexible environment that allows for easy set-up of equipment categories ranging from auxiliary and control plant to primary power equipment, civil works and line and cables. Each study set-up can be initiated from default categories or easily developed to client needs.



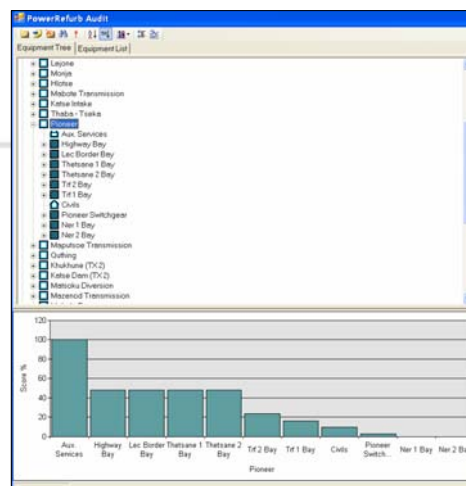
Age Profiles on Equipment Basis

Age in itself does not provide a clear indication of condition but allow for long-term renewal planning based on equipment life expectancy if operated under normal conditions.



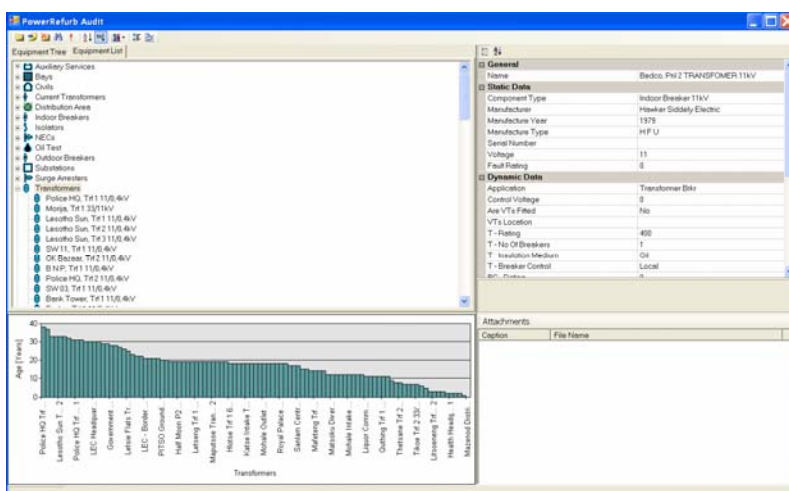
Prioritised Substation Report

PowerRefurb provides a holistic view of the system condition at either a substation level, equipment categories within a substation or equipment category across a system.



Substation Report

Customizable substation reports provide a summary of all equipment categories within a substation. Default category condition criteria and associated weights or study specific variables can be used.



Software requirements:

The PowerRefurb add-in requires the following components:

- MS Excel XP (2002), MS Excel 2003 or MS Excel 2007
- MS Windows XP SP1 or SP2